



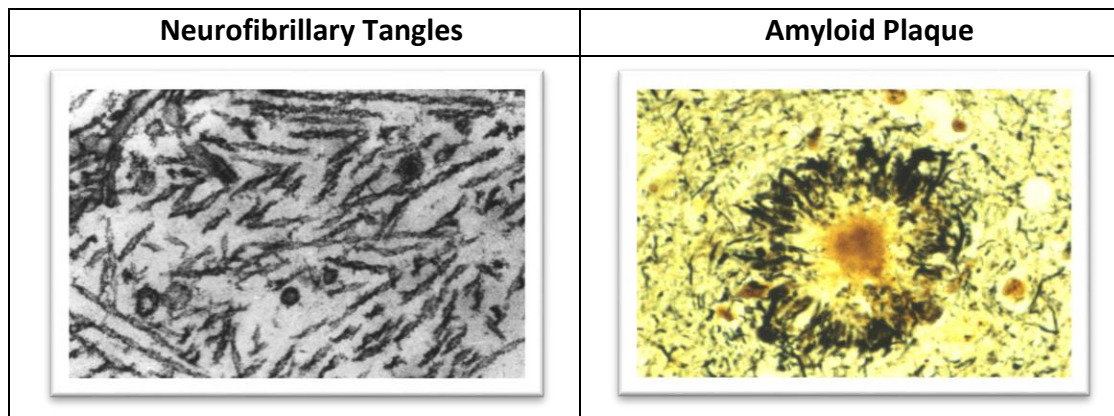
Alzheimer's Miscellany

Risk Factors

- Age (1 in 11 Canadians over age 65; 1 in 3 over age 85)
- Family history (especially, Familial Autosomal Dominant or FAD)

Genetics and Alzheimer's

- Two types: Sporadic (90 to 95% of cases); late onset
Familial (5 to 10%); symptoms begin in 40s to 50s



Statistics

- Brain changes of Alzheimer's Disease (that is, plaques and tangles) are found in almost all people with Down Syndrome by the age of 40
- Most studies report 80% of people with Down Syndrome will develop AD by the age of 60

- Early stage of Alzheimer's tends to be missed in Down Syndrome
- It is recommended that a baseline of Activities of Daily Living (ADL), behaviour, memory and cognitive function for individuals with DS be established at age 30 and evaluated repeatedly annually to determine any deterioration in these functions.